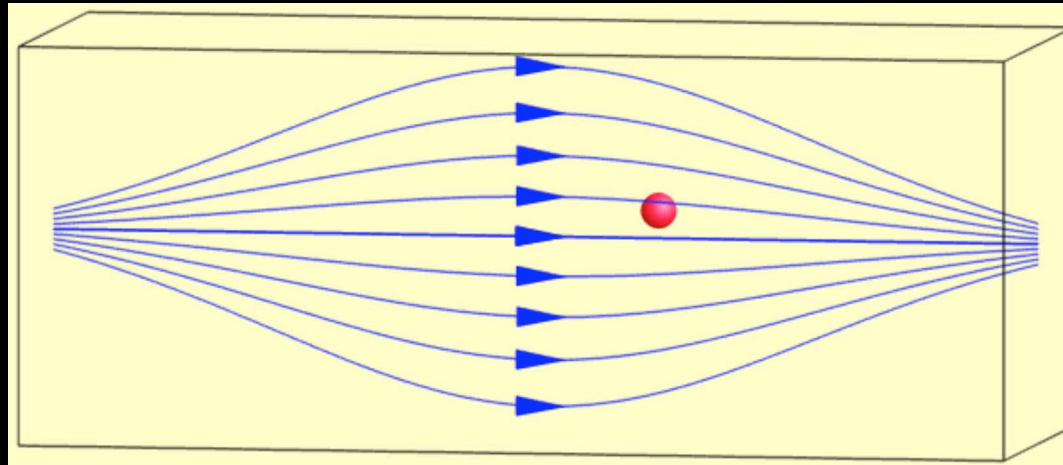
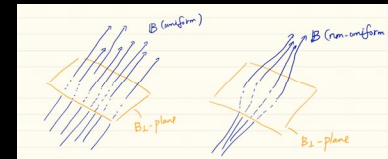


5. Interaction with non-uniform magnetic field

... global scale (1 ~ 4... local scale)



$$v_{tot}^2 = v_{\parallel}^2 + v_{\perp}^2 = const.$$

Mirror effect

Relatively low-energy charged particles are reflected at a region where magnetic field becomes strong.

This may cause particle acceleration when the region moves against an incident particle.