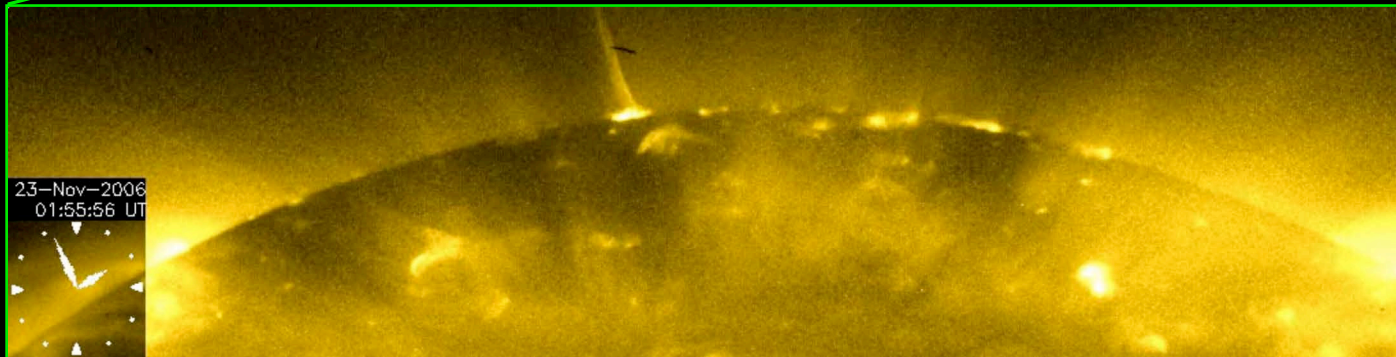


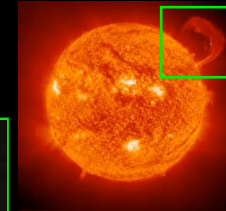
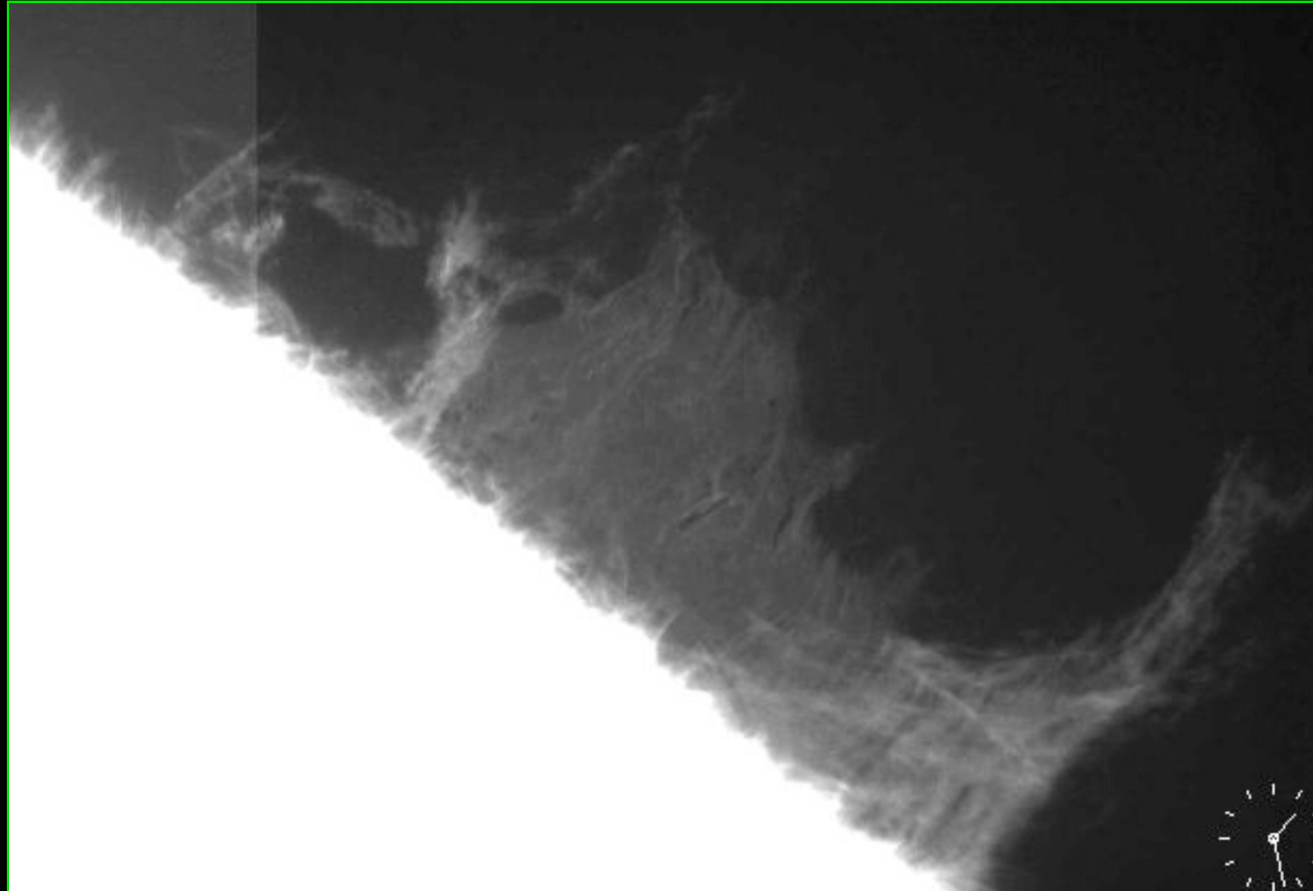
## *Coronal jet in a polar region*



Polar region observed in soft X-ray  
(*Hinode*)

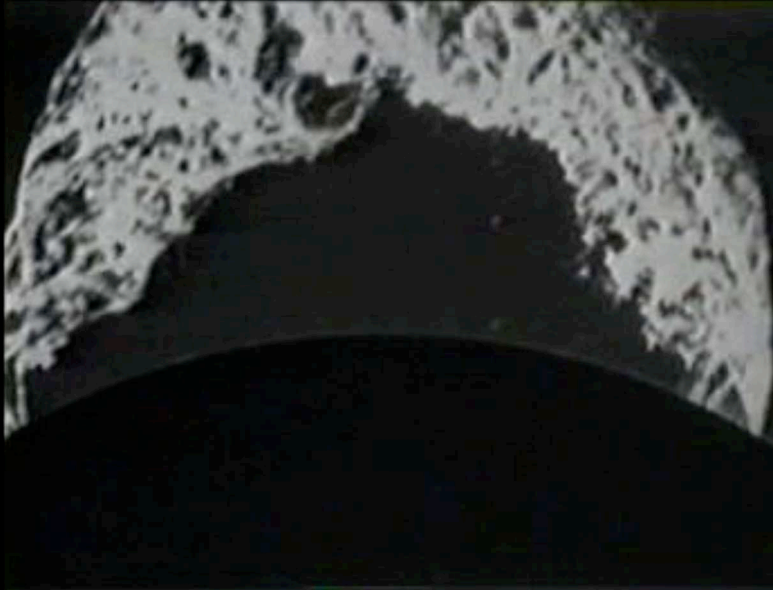
***Prominence/filament:* chromospheric plasma cloud floating in the corona**

internal motions (upflow, downflow, circulating flow)



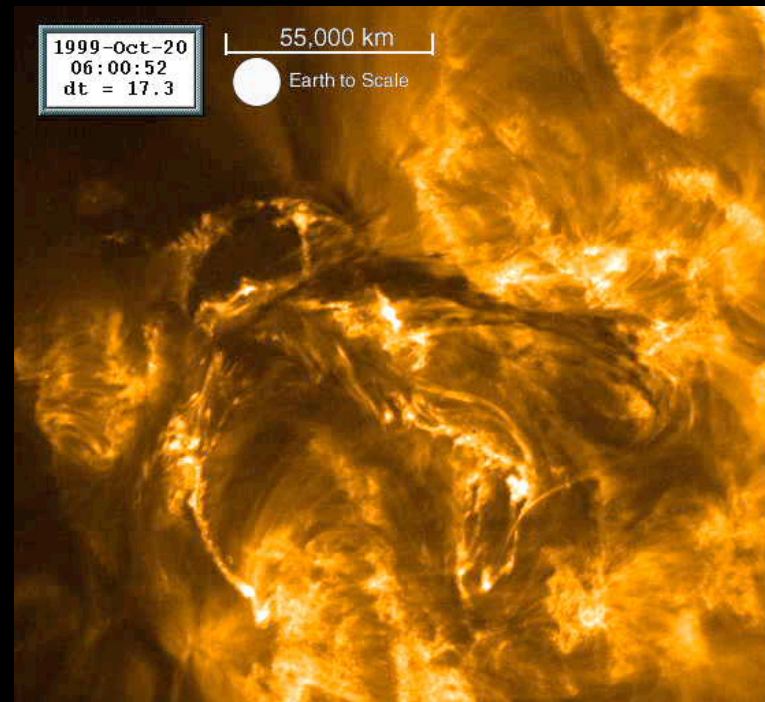
Prominence observed in Ca II H  
(*Hinode*)

## ***Eruption of a prominence (global motion)***



Observed in white light  
(HAO)

## ***Eruption of a filament (top view of an erupting prominence)***



Observed in FeXII (195 nm)  
(TRACE)