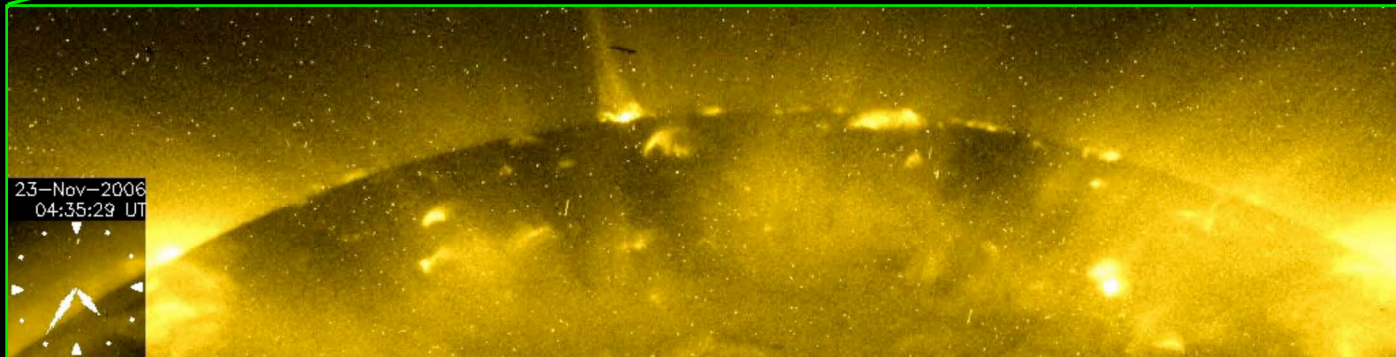


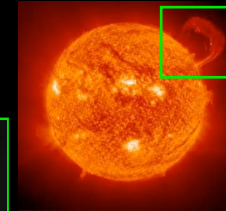
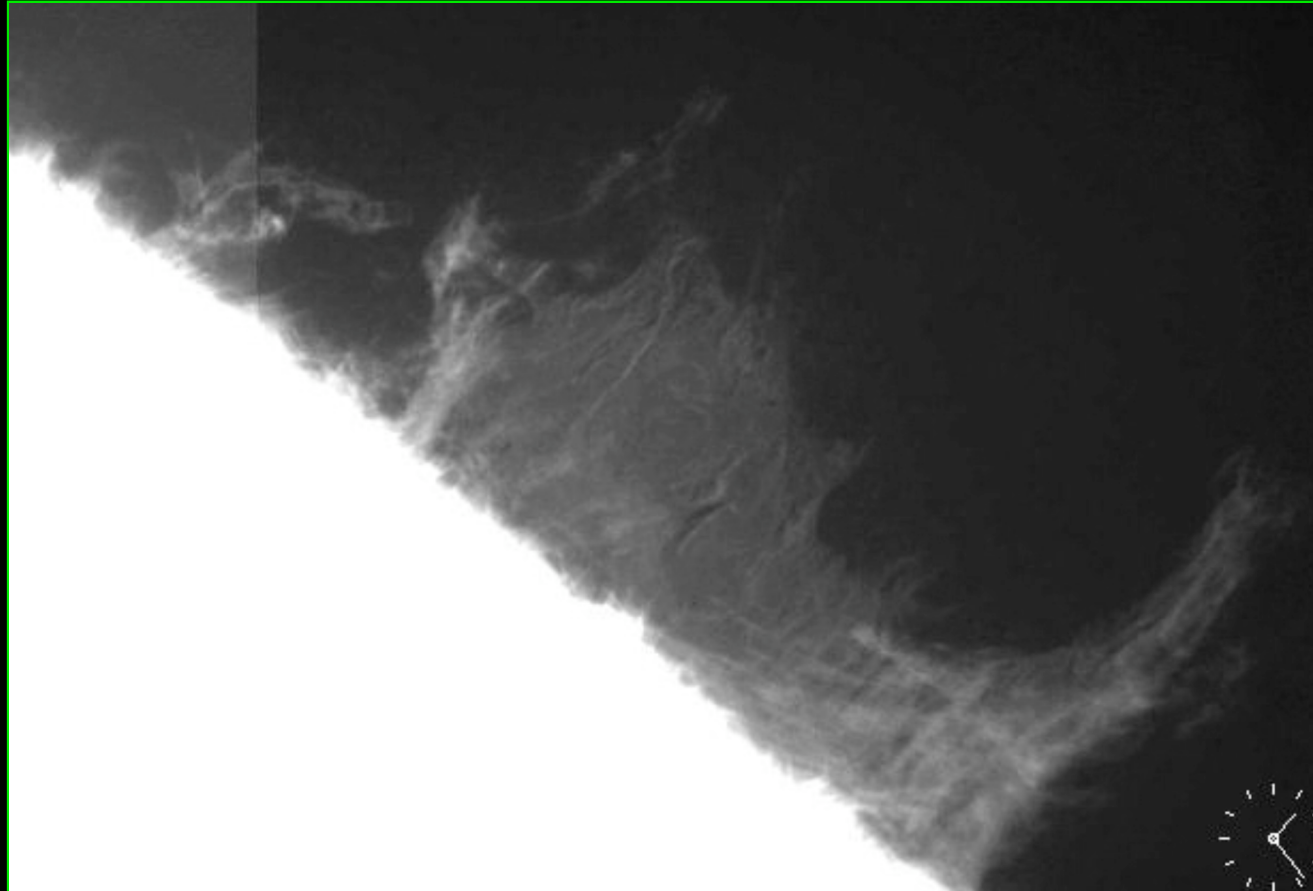
Coronal jet in a polar region



Polar region observed in soft X-ray
(*Hinode*)

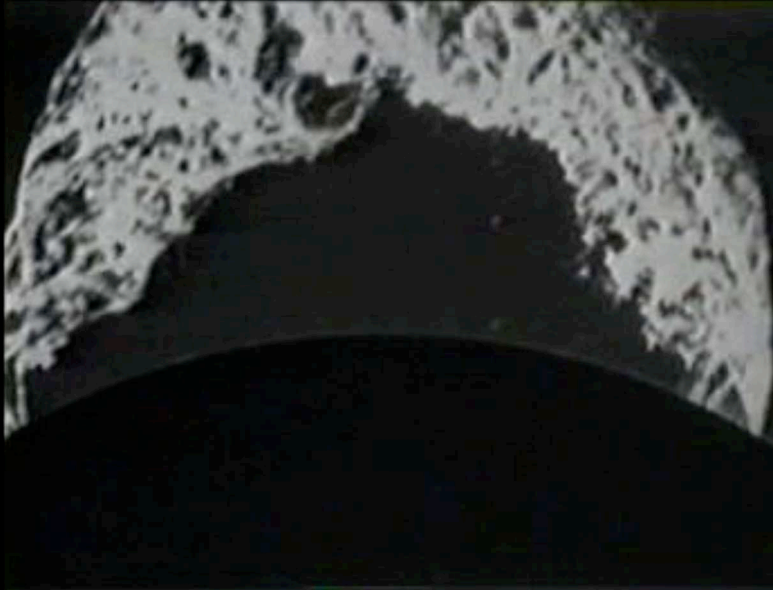
***Prominence/filament:* chromospheric plasma cloud floating in the corona**

internal motions (upflow, downflow, circulating flow)



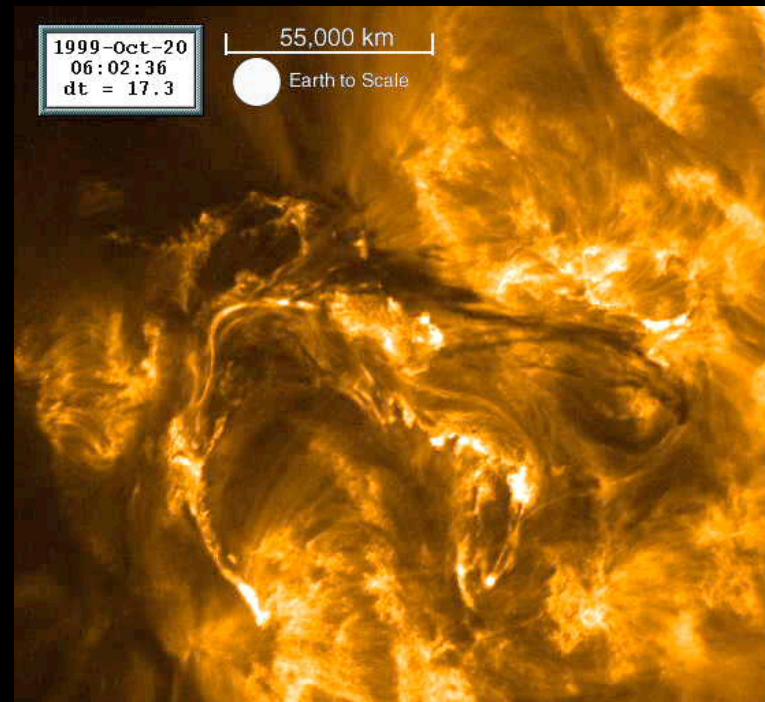
Prominence observed in Ca II H
(*Hinode*)

Eruption of a prominence (global motion)



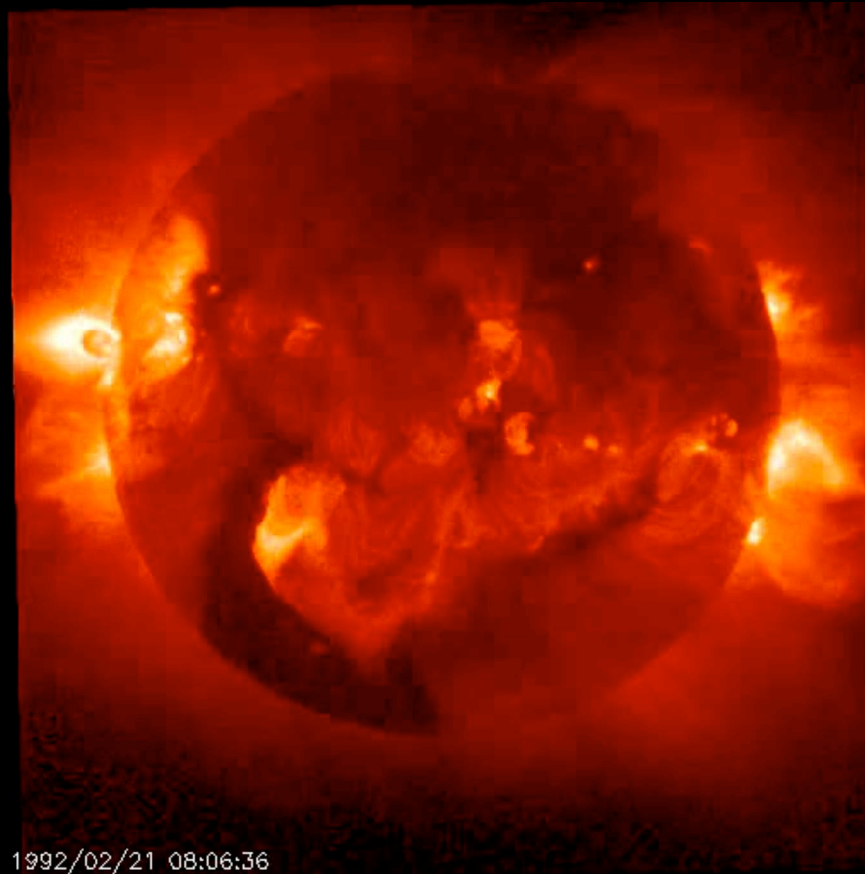
Observed in white light
(HAO)

Eruption of a filament (top view of an erupting prominence)



Observed in FeXII (195 nm)
(TRACE)

Solar flare: explosion in the corona



The Sun observed in soft X-ray (0.1 - 10 nm)
(Yohkoh)



The Sun observed in visible light